

## Surgical Style DIY Masks for Circle of Life

### Materials per mask:

(2) 8.5 inch x 8.5 inch Square of Oly\*Fun (100% Polypropylene) or other waterproof and breathable fabric. **NOTE: Oly\*Fun fabric does not require hemming, simply cut and sew!**

(2) 12 inch thin elastic rope or up to 1/8 width elastic for ear pieces

Several sewing pins or hemming clips

### For Flexible Nose Piece:

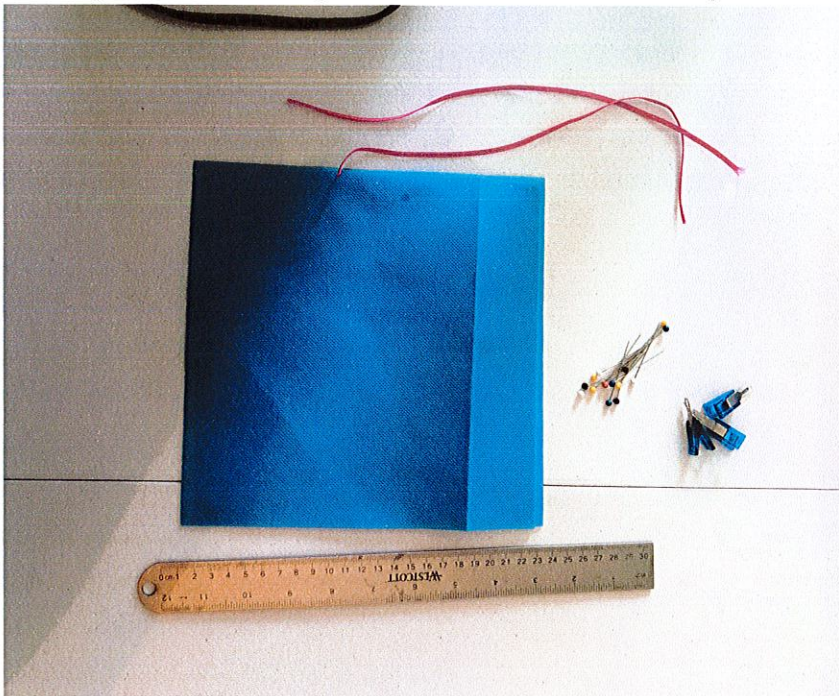
(1) 2.5 inch piece of bendable craft wire

(1) 4 inch piece of Bias Tape

*NOTE: A 2.5 piece of pipe cleaner can also be utilized instead of wire + bias tape. Please fold over ends of pipe cleaners slightly to prevent poking through of fabric. See last page for this modification.*

Thread

Sewing Machine - Serger could be used for some parts of the assembly.



Mask Components.



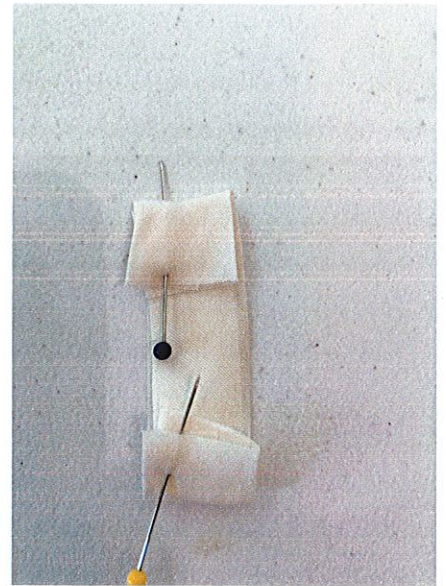
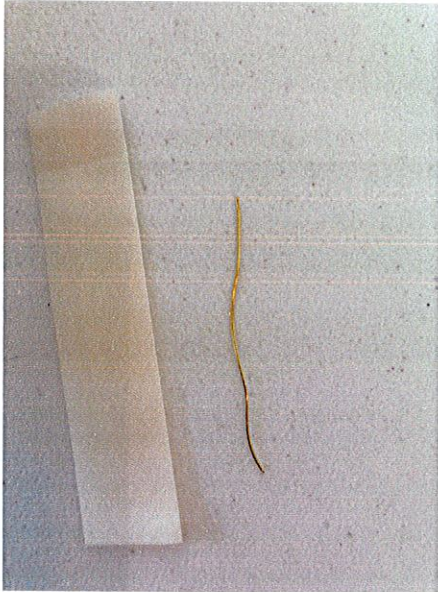
Flexible Nose Piece Components



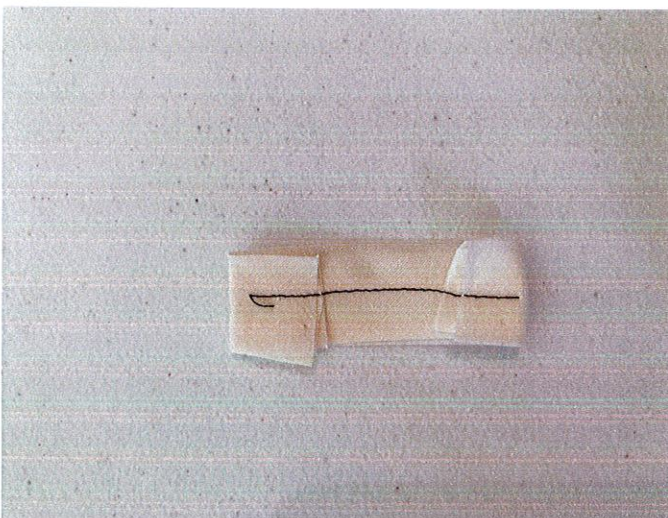
*Directions:*

Flexible Nose Piece: Really helps to keep droplets from seeping into nose and mouth area.

1. Cut Wire and Bias Tape
2. Place Wire into fold
3. Fold over edges and pin (*this helps keep the wire from poking through fabric and into eyes.*)



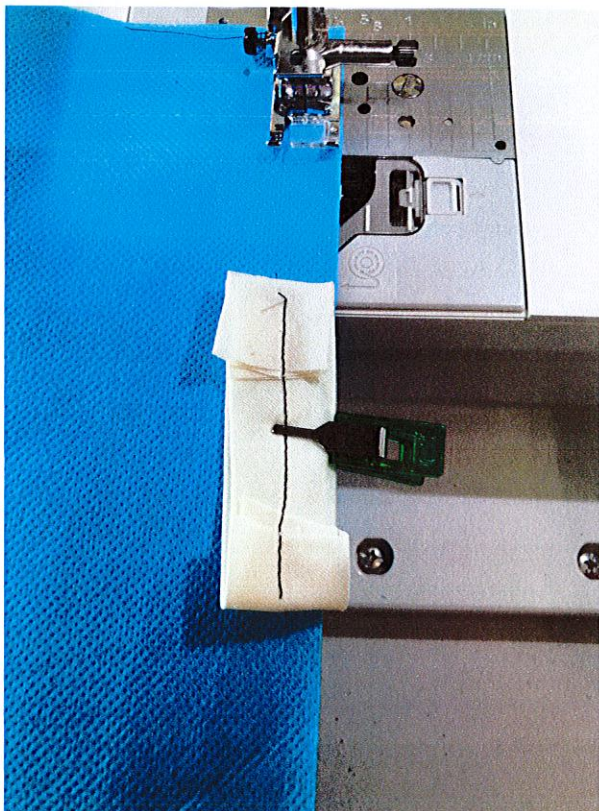
4. Sew into place. BE MINDFUL OF NOT SEWING OVER WIRE, it will break your needle!



5. Place on top of the two pieces of fabric (right sides together), ensuring it is as close to centered as possible. Pin or clip in place (see #6 picture) **NOTE: When turned to right sides out - the flexible nose piece will be on the inside of the mask.**

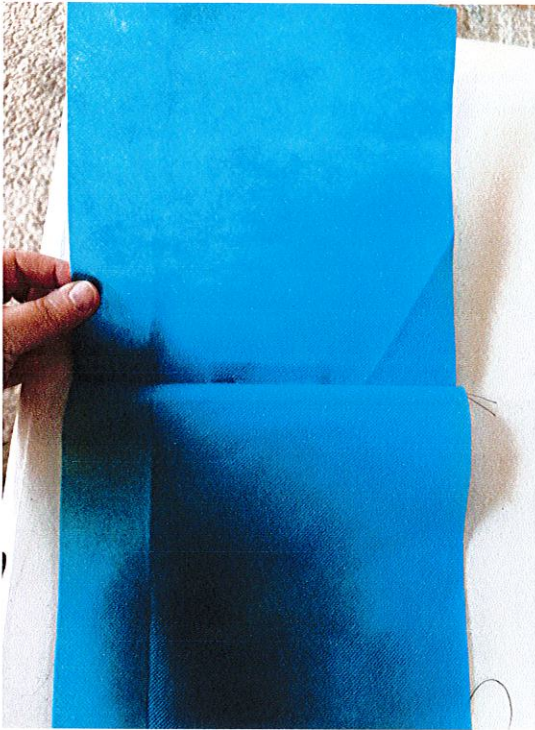


6. 1/4 inch seam. PLEASE MAKE SURE TO AVOID THE BENDABLE WIRE TO PREVENT SEWING NEEDLE BREAKAGE.

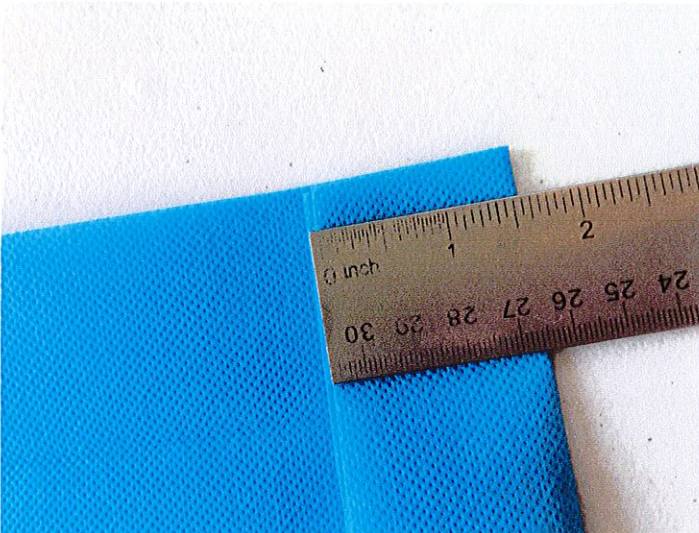




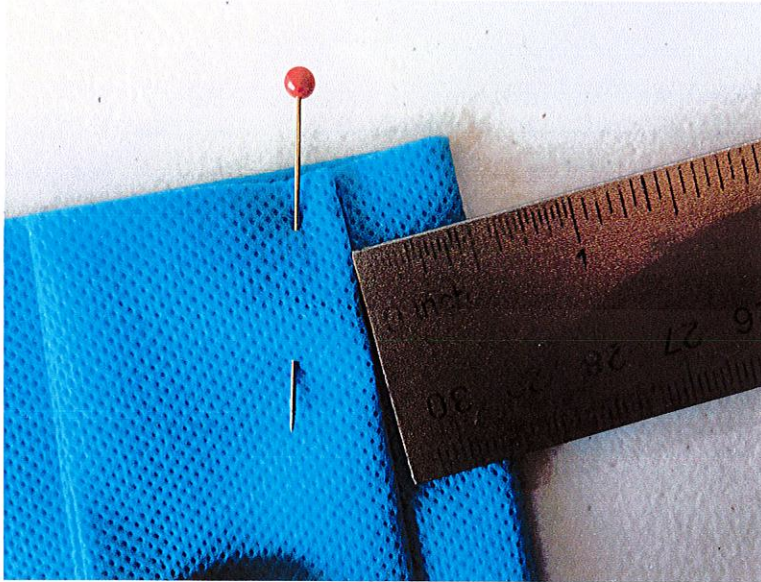
7. Turn right side out.



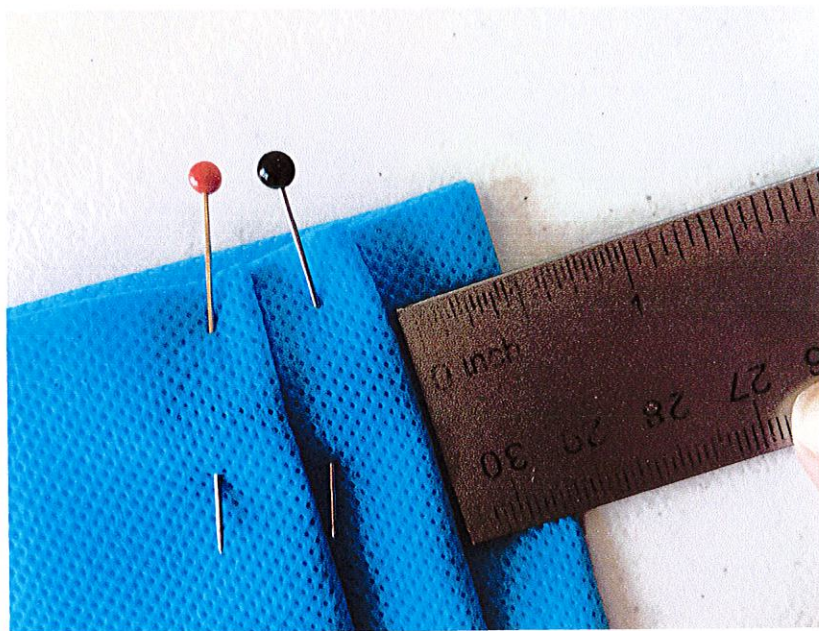
8. To start the Fan Fold, fold over 1 1/2 inches from the top. **Pin in place ON BOTH RIGHT AND LEFT SIDES.**



9. From the bottom of the first fold, create a 1/2 inch overlap in back, and extend next fold 1/2 inch from bottom of first fold. **PIN IN PLACE ON BOTH RIGHT AND LEFT SIDES.**

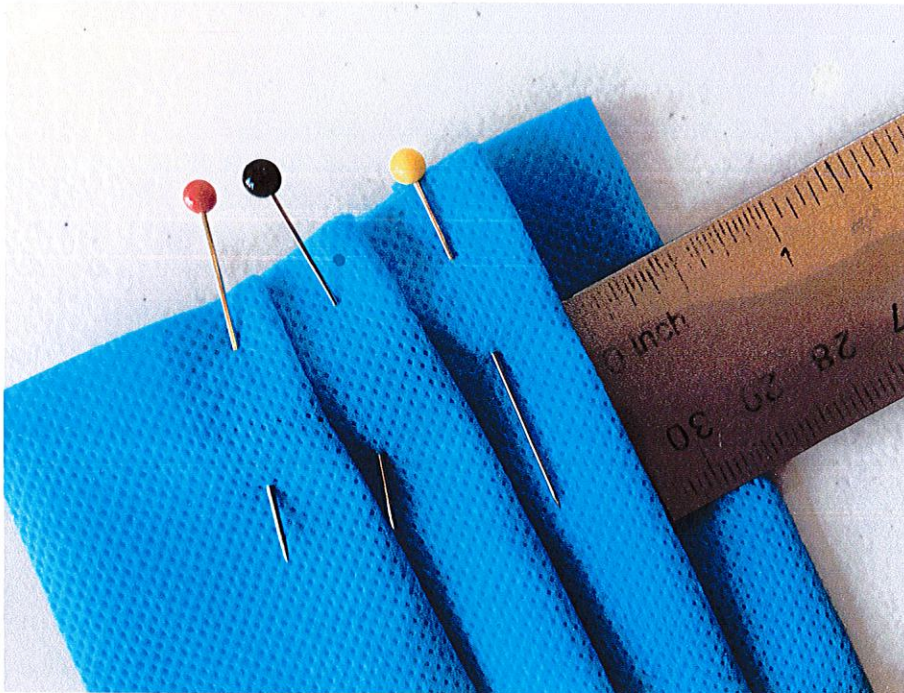


10. Repeat and **PIN IN PLACE ON BOTH RIGHT AND LEFT SIDES.**

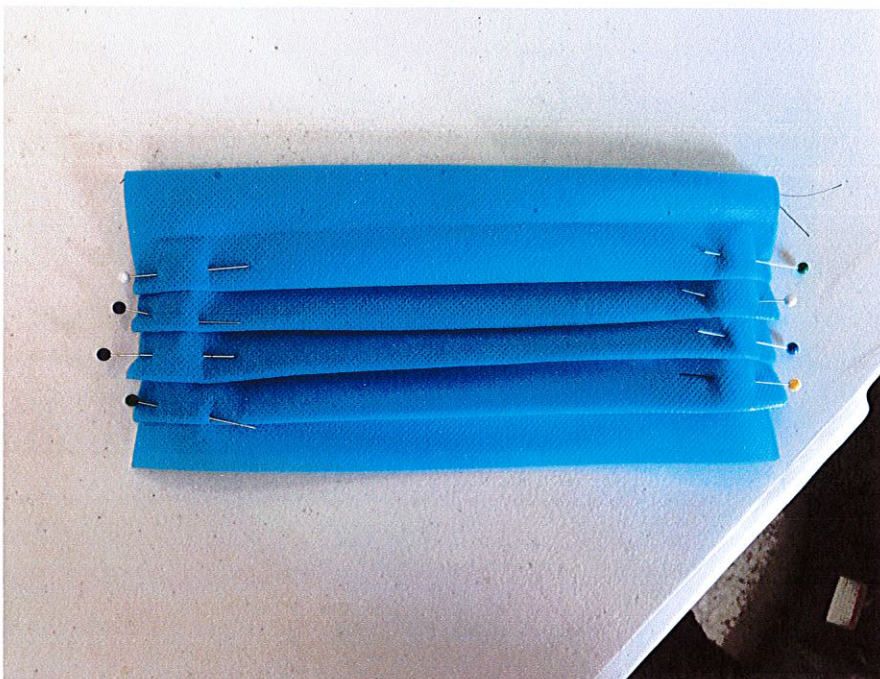




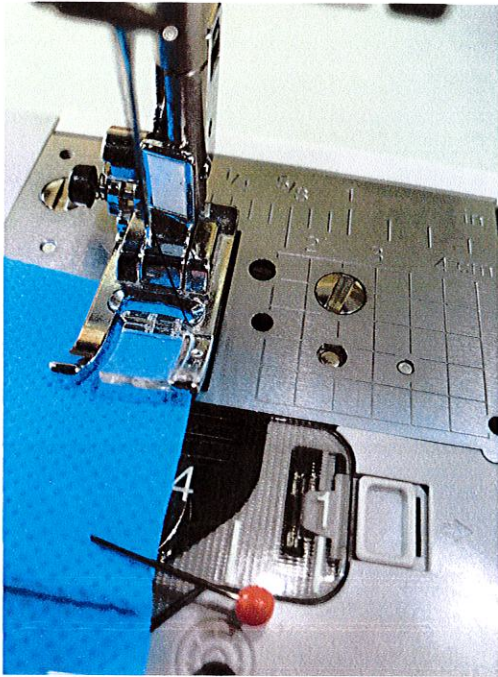
11. Repeat and **PIN IN PLACE ON BOTH RIGHT AND LEFT SIDES.**



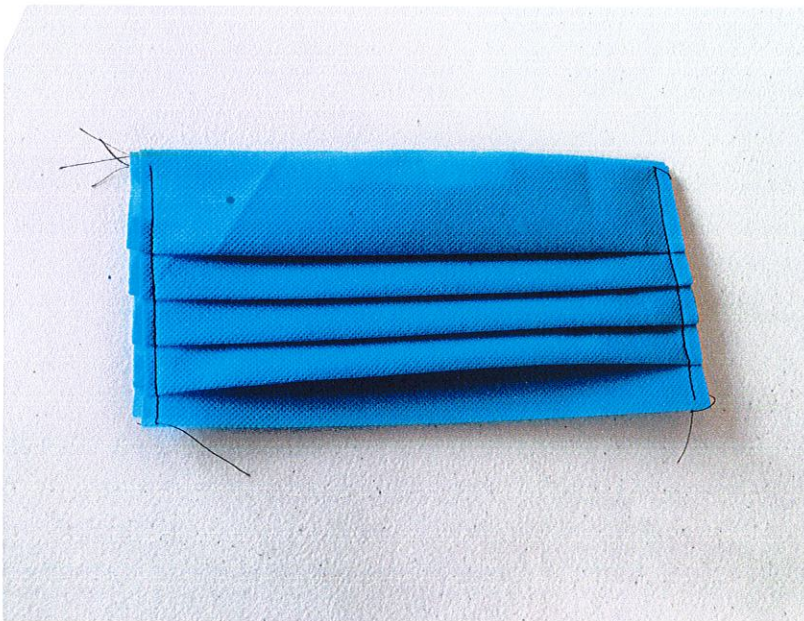
12. Fan fold should be 3 - 4 folds.



13. Sew folds into place using 1/4 inch seam. Repeat on opposite side.



14. FRONT SIDE WILL HAVE FOLDS GOING DOWN! (SEE #14 Picture below)

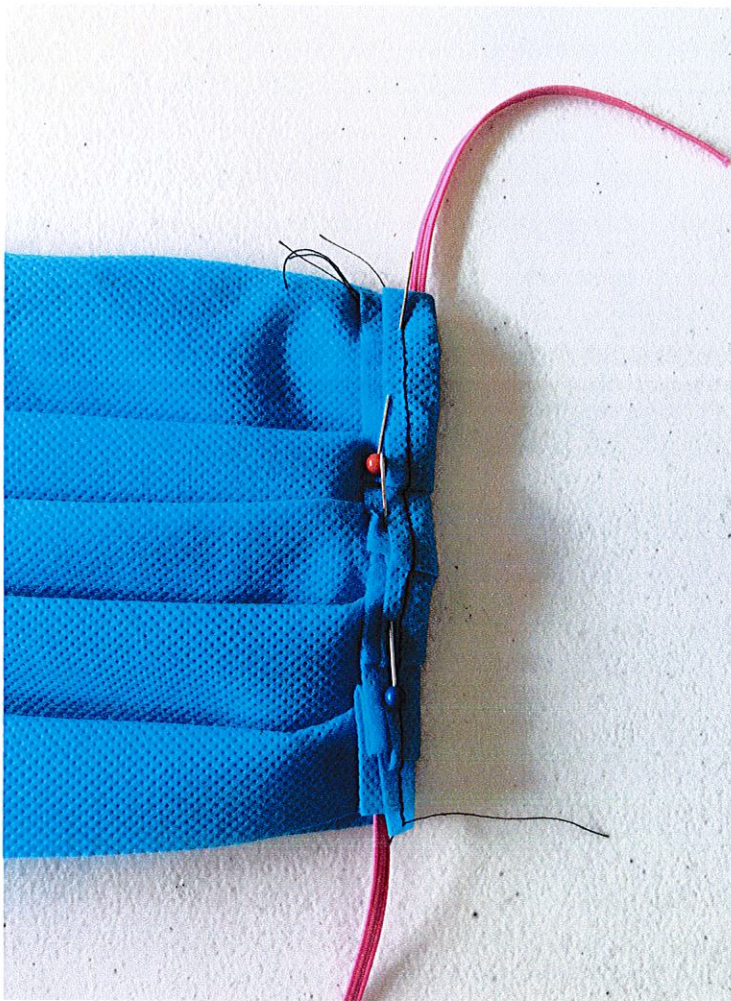


**FRONT:**

**Folds going down.**



15. With front side DOWN, pin 12 inch piece of elastic into place by creating folding over 1/4 inch of fabric. Pin in place. Repeat on other side.



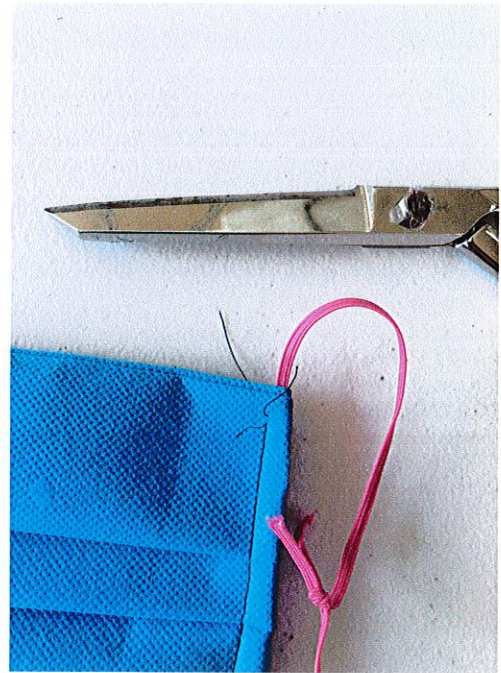
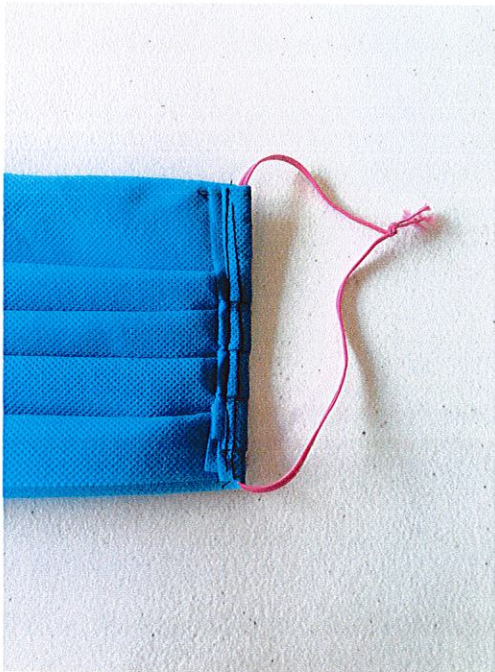
**BACK:**

**Folds going up.**

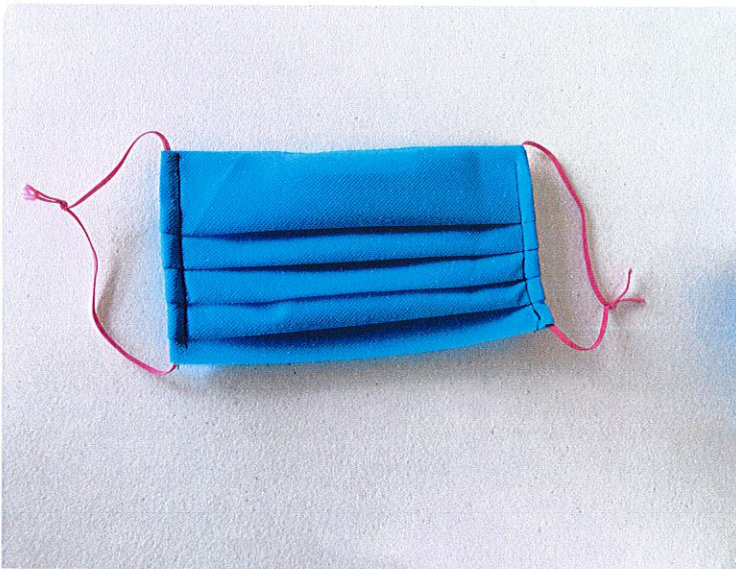
16. Sew as close to the inner edge as possible so that elastic can be free from stitching (only if possible, not 100% necessary). Repeat on other side.



17. Tie ends of elastic and trim all threads.



18. FINISHED!! YAY! Thank you from all of us at Circle of Life!

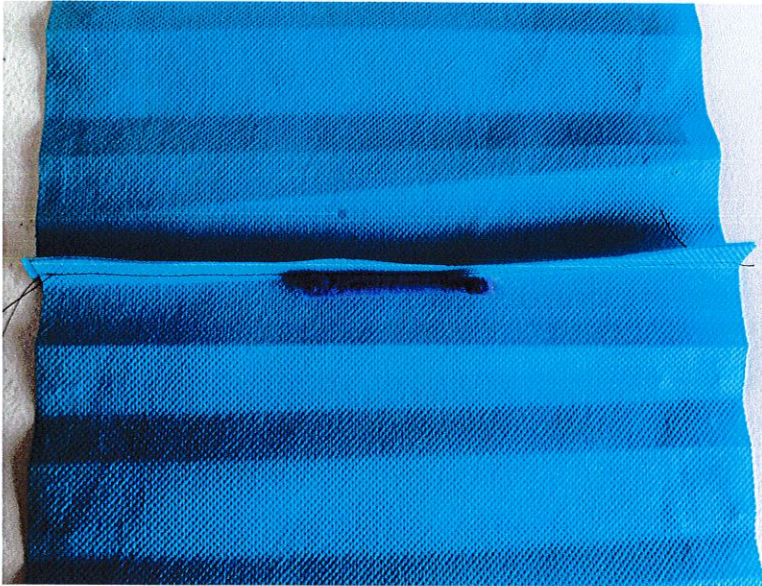


**NOTE:** Notice that the bottom remains open.. This is great for adding an additional filter between the two layers of fabric.

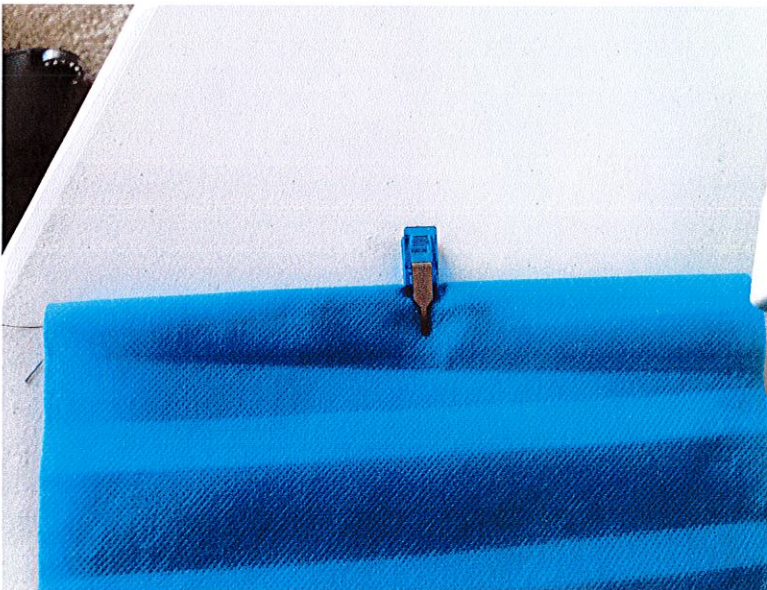


### **PIPE CLEANER OPTION**

1. Sew top with right sides together. Open and place pipe cleaner in the top middle of inside seam:



2. Fold over with right sides out and secure inner pipe cleaner with pin/clip.





3. Sew to encase the pipe cleaner being mindful not to sew directly over pipe cleaner to prevent sewing machine needle breakage.

